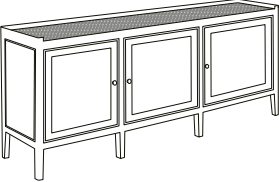

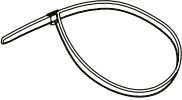



# Garden Trading®

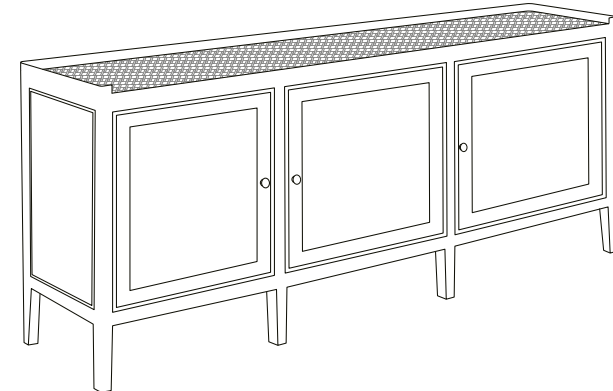
## Chesterton Sideboard Assembly Instructions

### Parts & Hardware Included


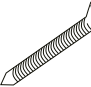
A		x 1PC
B		x 4 PCS
C		x 2 PCS
D	 5/8"	x 4 PCS

Please read through these instructions and ensure they are kept for future reference.  
All parts and hardware are listed on the back of this guide.

**WHEN ASSEMBLING THIS PRODUCT PLEASE PLACE PARTS ON A SOFT SURFACE TO AVOID DAMAGE OR SCRATCHES.**



### Hardware Not Included

 x 4	 x 4
Suitable wall plugs Recommended: Fischer S6	1 1/4" Screws

### Tools Required

Tape Measure  
Pencil  
Screwdriver  
Hammer  
Drill and Suitable Drill Bit

### Care Instructions

This product is made from Bayur Wood. Wood is a natural material and natural colour variances may occur.

To keep your sideboard clean, we advise dusting regularly with a small brush or vacuum. Any spillages should be wiped clean with a damp cloth immediately in the direction of the grain.

To preserve its condition and avoid fading over time, avoid exposing your furniture to direct sunlight. Discolouration may occur and cause the wood to crack.

We recommend keeping your sideboard away from heat sources like fireplaces or radiators - plus moisture - to prevent warping.

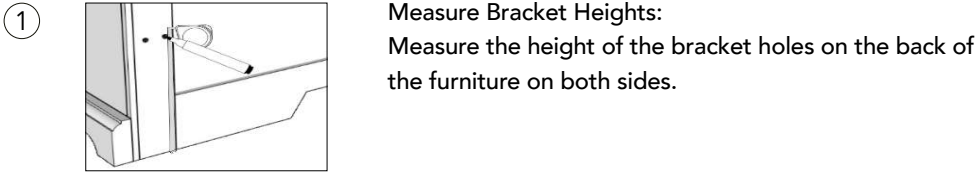
Please do not drag the furniture, we recommend to always lift it to move, avoiding any breakages.

# Garden Trading®

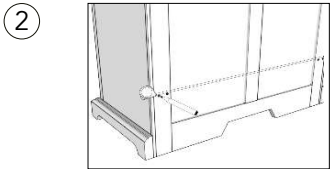
gardentrading.co.uk

customerservices@gardentrading.co.uk

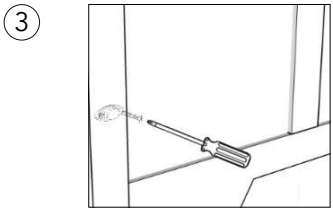
TGTC, Hargreaves Road, Groundwell Industrial Estate, Swindon, SN25 5AZ



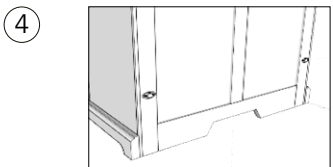
**Measure Bracket Heights:**  
Measure the height of the bracket holes on the back of the furniture on both sides.



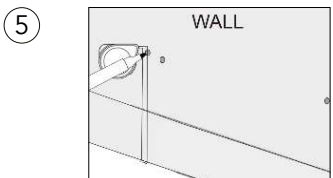
**Measure Bracket Hole Distance:**  
Measure the distance between the bracket attached to the furniture.



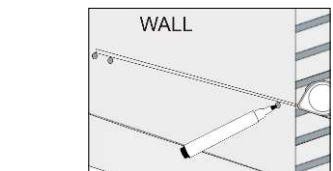
**Attach Brackets to Furniture:**  
Securely attach a bracket to the back bottom rail of the furniture using the provided 5/8" screw through the smaller hole.



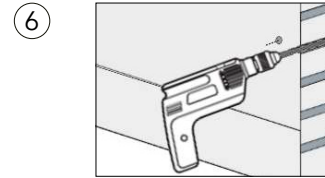
**Align Wall Bracket:**  
Use the brackets already attached to the back bottom of the furniture to align with the wall bracket provided in the hardware package.



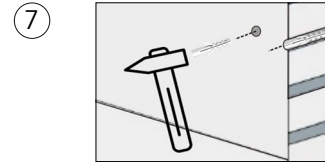
**Mark Wall Bracket Position:**  
Measure where the bracket needs to be placed on the concrete wall using the measurements taken for the bracket holes on the back of the furniture.



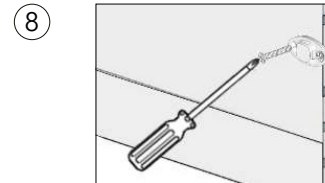
Mark the position on the concrete wall where the bracket needs to be placed.



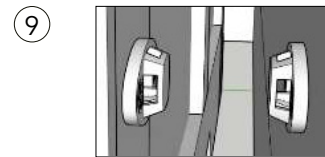
**Drill Holes:**  
Drill a hole in the concrete wall at the marked positions according to the recommended size for your fischer (S6) or wall plug.



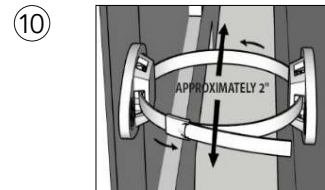
**Attached Fischer/Wall Plug:**  
Attached fischer/wall plug to concrete wall using a hammer.



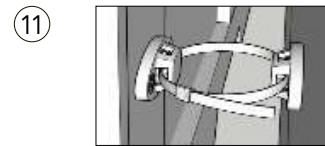
**Install Bracket:**  
Locate the plug hole on the concrete wall. Attach the bracket using the 1 1/4" screw (not included) through the smaller hole.



**Position Furniture:**  
Place the furniture into position so both brackets are aligned.



**Secure Restraint Strap:**  
Lace the end of the restraint strap through the large hole in each bracket. Bring both ends together and slide the flat end through the locking end, drawing it through until the slack is removed.



**Confirm Security:**  
Confirm that the strap is securely laced and locked.

Anti-tip kit hardware and installation instructions are included. We strongly recommend the professional installation of the included anti-tipping restraint in order to securely anchor your furniture to the wall, preventing risk of damage or serious injury.

Note: Before drilling, check for hidden pipes and cables in the wall in order to avoid them. Where the furniture is positioned against a partition wall, the restraint must be fixed to a wall stud.

Any damage incurred to the furniture or the concrete wall as a result of improper installation of this restraint will be the responsibility of the owner.